

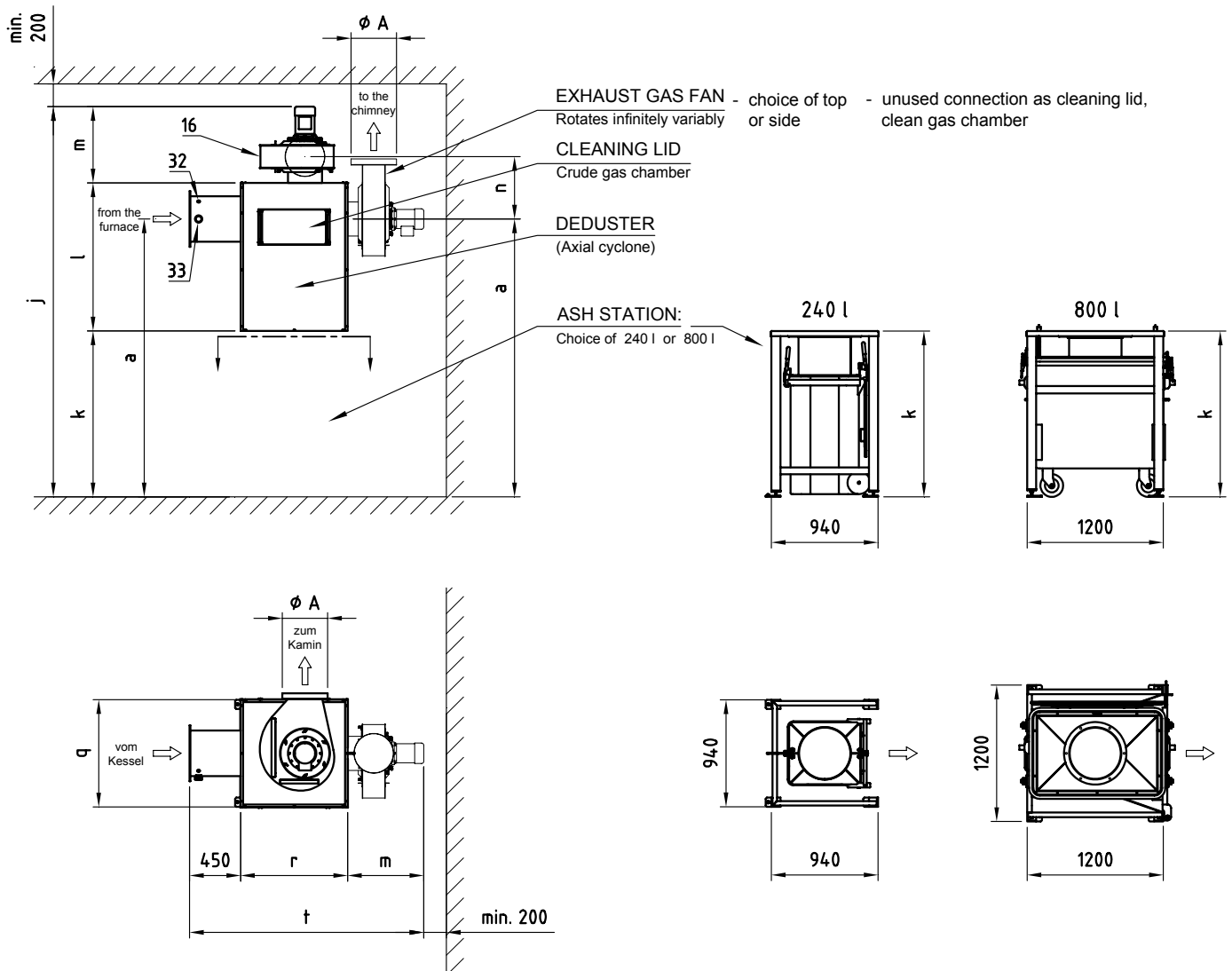
Description:**Exhaust gas de-duster 240 litres** [Item no. KPT-E...-2]**Exhaust gas de-duster 800 litres** [Item no. KPT-E...-8]

The exhaust gas deduster is for minimising dust emissions and is executed as a multi-cyclone with an axial function. The deduster is completely insulated, attractively encased and provided with a total of three lids for cleaning. The crude gas space is cleaned via the cleaning lid on the side. The clean gas chamber is cleaned via the top or rear cleaning lid (fan connection not used).

The ash container has rollers, connects to the deduster by quick-action fasteners and moves out simply for emptying. The exhaust fan (see description of PYRTEC) is mounted on top, either vertically or horizontally, as desired.

Note: One ash bin/ash skip comes with the system. Additional bins/ash skips have to be ordered separately. (Item no: EB-240/EC-800, Spec Sheet: 6120)

Dimensions and data:



Ash station: Positioning is possible in 4 x 90° (removal of ash skip)
The drawing shows removal to the right.

Dimensions:

Exhaust gas de-duster [Item no.]	KPT-E530-	KPT-E720-	KPT-E950-	KPT-E1250-
A	350	350	450	450
a	2359	2491	2444	2639
j	3166	3390	3425	3620
k	1330	1462	1462	1657
l	1250	1250	1300	1300
m	586	678	663	663
n	447	461	546	546
q	1090	1090	943	943
r	614	614	943	943
t	1650	1742	2056	2056

For weights and electrical data, see Spec Sheet 6010