

- Ash removal in the socket container [art.-no. KRT-ES-100]**
- Ash removal in the socket container [art.-no. KRT-ES-150]**
- Ash removal in the socket container [art.-no. KRT-ES-220]**
- Ash removal in the socket container [art.-no. KRT-ES-300]**
- Ash removal in the socket container [art.-no. KRT-ES-400]**
- Ash removal in the socket container [art.-no. KRT-ES-540]**

Complete feed worm ash removal from the ash container in the fire block below the burner to the socket container with maximum contents. With the light barrier the ash height is kept constant over the feed worm. In this way, the ashes can glow out in the ash pan below the firebox and in nominal operating mode only cooled glowed out ashes are fed into the container. With the large socket container, maximum service intervals are attained.

Consists of:

- Burner ash pan with ash leveling and ash removal feed worm of high temperature proof steel.
Driven by 0,25kW worm drive motor
- Socket container with maximum contents and two maintenance doors to remove ashes with vacuum or stoker.

Ash removal from external container [art.-no. KRT-EA]

Complete feed worm ash removal from the ash container in the firebox to a mobile, galvanized external ash container of 240 l volume. With the light barrier the ash height is kept constant over the feed worm. In this way, the ashes can glow out in the ash pan below the firebox and in nominal operating mode only cooled glowed out ashes are fed into the container.

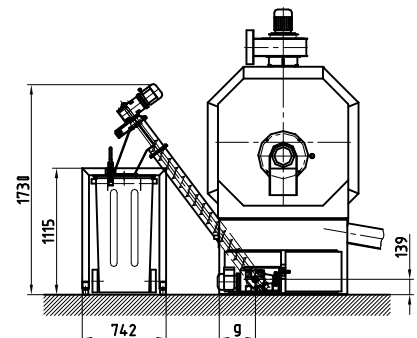
Consists of

- Burner ash pan with ash leveling and ash removal worm of high temperature proof steel.
Driven by 0,25kW worm drive motor
- Ash incline feed worm as pipe feed worm with direct takeover as of the ash removal feed worm.
Driven by 0,55kW worm drive motor
- Connecting station with mobile ash container of 240l

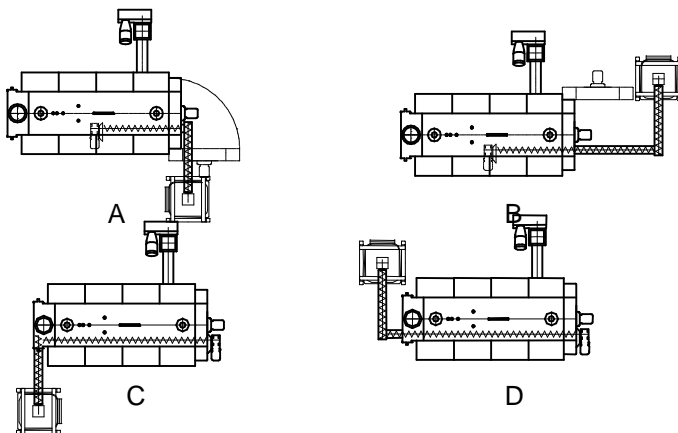
- Extended ash feed worm per piece and m [art.-no. KRT-EA-MS]**
- Special edition ash container 90l portable [art.-no. KRT-EA-90]**
- Connecting station with 800l container movable [art.-no. KRT-EA-800]**

Burner-type	KRT-100-A	KRT-150-A	KRT-220-A	KRT-300-A	KRT-400-A	KRT-540-A
f [mm]	954	1054	1054	1192	1270	1295
g [mm]	250	250	319	319	301	301

Standard:



Connecting station with mobile ash container mountable at every 90° and providing selectable direction in which it can be extended.



Standard variation and A-D mirror image possible

