

Description:**Exhaust gas de-duster 90 litres** [Item no. KRT-E...-1]

The exhaust gas deduster is for minimising dust emissions and is executed as a multi-cyclone with an axial function. The deduster is completely insulated, attractively encased and provided with three lids for cleaning. The crude gas space is cleaned via the cleaning lid on the side. The clean gas chamber is cleaned via the top or rear cleaning lid (fan connection not used).

The ash container, which is provided with a trolley, connects to the deduster by quick-action fasteners and moves out simply for emptying. The exhaust fan (see description of PYROT) is mounted either on top or on the side, as desired.

Note: The exhaust gas deduster is required for the PYROT with fuels with high amounts of fine particles.

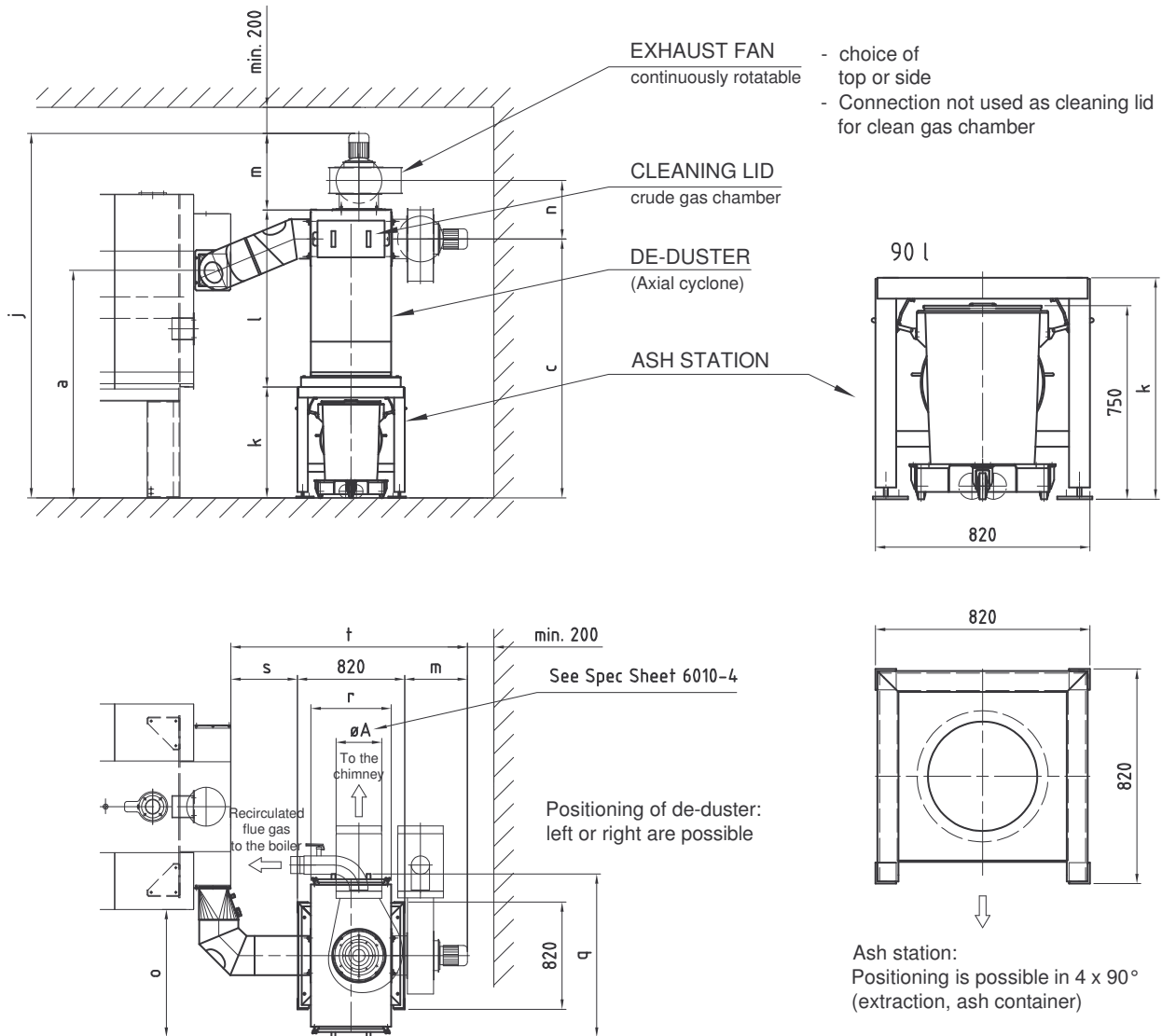
(Woodworking businesses, forest woodchips with fine particles amounting to more than 4%)

One ash bin comes with the system.

Additional ash bins have to be ordered separately.

Ash Bin, 90 litres, reserve [Item No. EB-90]

Dimensions and data:



Exhaust gas de-duster PYROT [Item no.]	KRT-E150-1	KRT-E300-1	KRT-E400-1	KRT-E540-1
Dimensions:				
A [mm]	200	250	300	300
a [mm]	1521	1621	1671	1741
c [mm]	1518	1775	1875	1949
j [mm]	2338	2634	2835	2930
k [mm]	850	850	850	920
l [mm]	898	1155	1247	1247
m [mm]	590	629	730	730
n [mm]	465	497	582	582
o [mm]	545	530	977	977
r [mm]	820	820	820	820
s [mm]	280	70	370	370
t [mm]	1690	1519	1920	1920
u [mm]	-	-	1250	1250

Note: See Spec Sheet 6010 on how the exhaust gas is conducted